

SEE SHEET
NO.32
STEUB.HILLTOP

#11 OHIO POWER 613-3 0.40A² RES (135A000)

NOTE A: AT VOL 581-460 A 1.024A² TRACT WAS
DEDICATED FOR PUBLIC USE AND THE MAGNUS
PROPERTY SURRENDERS THAT TRACT.

#35-A-2 NEIGHBORHOOD HOSPITALITY 311-361 1.469A²

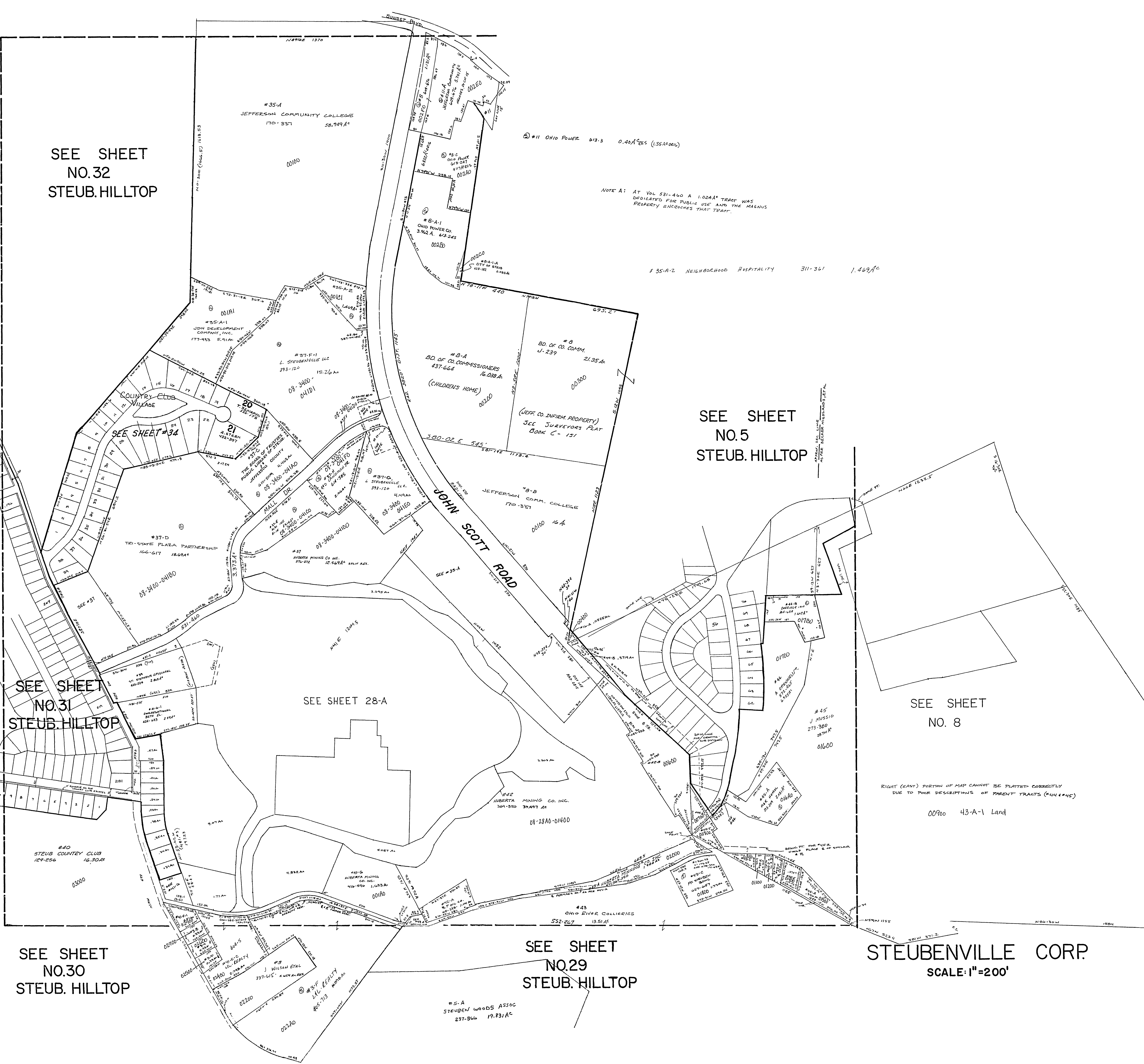
SEE SHEET
NO.5
STEUB.HILLTOP

SEE SHEET
NO. 8

RIGHT (EAST) PORTION OF MAP CANNOT BE PLATTED CORRECTLY
DUE TO POOR DESCRIPTIONS OF PARENT TRACTS (644445)

00900 43-A-1 Land

STEUBENVILLE CORP.
SCALE: 1"=200'



SEE SHEET
NO.31
STEUB.HILLTOP

SEE SHEET 28-A

SEE SHEET
NO.29
STEUB.HILLTOP

SEE SHEET
NO.30
STEUB.HILLTOP

#5-A
STEUBEN WOODS ASSOC
237-866 19.831A²

#37-F	C STEUBENVILLE LLC	0.12A ²	393-120
#41-F-1	J.H. STARKAGGI	0.51A	132-916
#3-B	"	0.33A	"
#3-C	"	0.33A	"
#3-D	"	0.33A	"
#16A	DD OF CO COMM	0.052A	314-180
#48-B	"	3.12A	318-125
#43-N1	"	0.058A	318-125
#44-A	"	0.054A	318-125
#44-B	"	0.054A	318-125
#45-T	"	0.054A	318-125
#45-C	OHIO RIVER COLLIER	1.25A	552-267
#45-R	O. COLE	1.74A	238-317
#45-F	E.A. HUMPHREY	1.77A	246-277
#45-G	"	0.178A	552-267
#45-H	G. HAYDEN	0.178A	552-267
#45-I	H. MCLEOD	0.178A	552-267
#45-J	"	0.178A	552-267
#45-K	"	0.178A	552-267
#45-L	"	0.178A	552-267
#45-M	"	0.178A	552-267
#45-N	"	0.178A	552-267
#45-O	"	0.178A	552-267
#45-P	"	0.178A	552-267
#45-Q	"	0.178A	552-267
#45-R	"	0.178A	552-267
#45-S	"	0.178A	552-267
#45-T	"	0.178A	552-267
#45-U	"	0.178A	552-267
#45-V	"	0.178A	552-267
#45-W	"	0.178A	552-267
#45-X	"	0.178A	552-267
#45-Y	"	0.178A	552-267
#45-Z	"	0.178A	552-267
#46	"	0.178A	552-267
#47	"	0.178A	552-267
#48	"	0.178A	552-267
#49	"	0.178A	552-267
#50	"	0.178A	552-267
#51	"	0.178A	552-267
#52	"	0.178A	552-267
#53	"	0.178A	552-267
#54	"	0.178A	552-267
#55	"	0.178A	552-267
#56	"	0.178A	552-267
#57	"	0.178A	552-267
#58	"	0.178A	552-267
#59	"	0.178A	552-267
#60	"	0.178A	552-267
#61	"	0.178A	552-267
#62	"	0.178A	552-267
#63	"	0.178A	552-267
#64	"	0.178A	552-267
#65	"	0.178A	552-267
#66	"	0.178A	552-267
#67	"	0.178A	552-267
#68	"	0.178A	552-267
#69	"	0.178A	552-267
#70	"	0.178A	552-267
#71	"	0.178A	552-267
#72	"	0.178A	552-267
#73	"	0.178A	552-267
#74	"	0.178A	552-267
#75	"	0.178A	552-267
#76	"	0.178A	552-267
#77	"	0.178A	552-267
#78	"	0.178A	552-267
#79	"	0.178A	552-267
#80	"	0.178A	552-267
#81	"	0.178A	552-267
#82	"	0.178A	552-267
#83	"	0.178A	552-267
#84	"	0.178A	552-267
#85	"	0.178A	552-267
#86	"	0.178A	552-267
#87	"	0.178A	552-267
#88	"	0.178A	552-267
#89	"	0.178A	552-267
#90	"	0.178A	552-267
#91	"	0.178A	552-267
#92	"	0.178A	552-267
#93	"	0.178A	552-267
#94	"	0.178A	552-267
#95	"	0.178A	552-267
#96	"	0.178A	552-267
#97	"	0.178A	552-267
#98	"	0.178A	552-267
#99	"	0.178A	552-267
#100	"	0.178A	552-267